

State of Wyoming Corner Record

(In compliance with the **CORNER PERPETUATION AND FILING ACT**, Wyoming Statutes, 1997 Section 33-29-140 et. seq., and the Rules and Regulations of the Board of Professional Engineers and Professional Land Surveyors)

Reverse side of this form may be used if more space is needed.

Record of original survey and citation of source of historical information (if corner is lost or obliterated). Description of corner monumentation evidence found and/or monument and accessories established to perpetuate the location of this corner. Sketch of relative location of monument, accessories, and reference points with course and distance to adjacent corner(s) (if determined in this survey). Method and rationale for reestablishment of lost or obliterated corner.

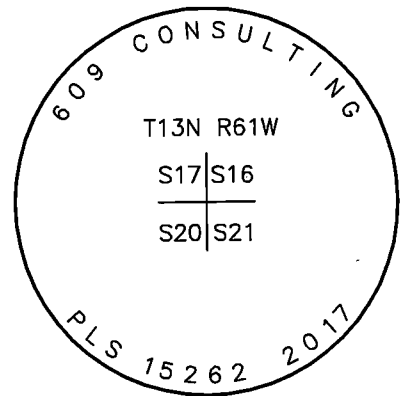
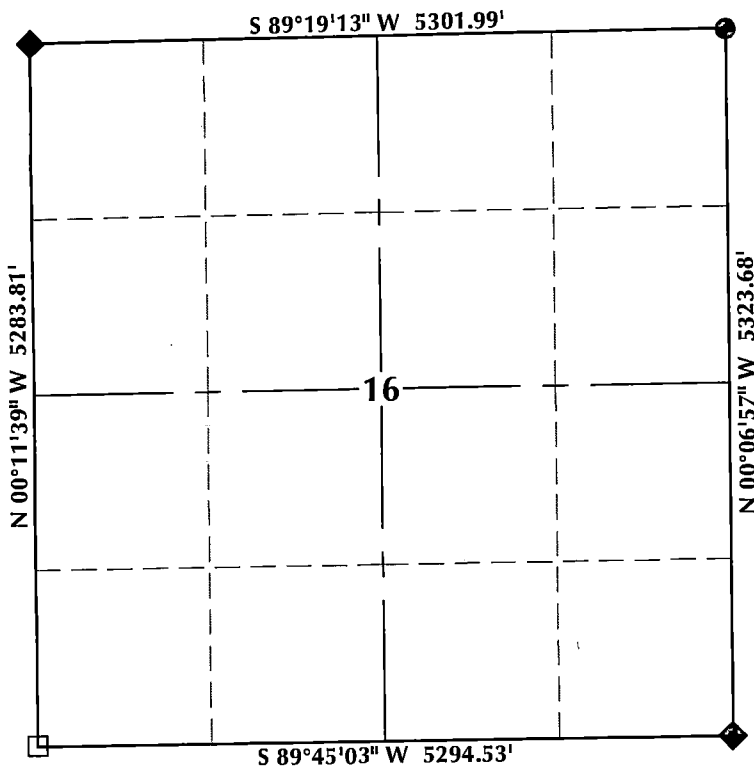
RECORD: Set sandstone 18x12x6 for corner to sections 16, 17, 20, 21.

FOUND: Nothing.

SET: 2 1/2" aluminum cap, stamped PLS 15262, on #5 rebar, 10" below the intersection of County Road 156 and County Road 204.

Monument Location

Monument Inscription



NOTES:

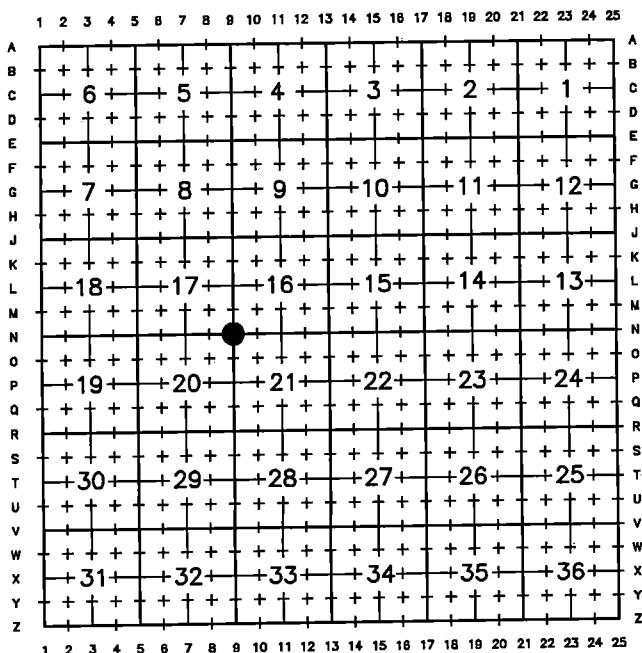
1. ▲ INDICATES FOUND BRASS CAP
2. ■ INDICATES FOUND STONE
3. ● INDICATES FOUND ALUMINUM CAP
4. ◆ INDICATES SET ALUMINUM CAP
5. □ INDICATES SECTION CORNER PER CORNER RECORD
6. BASIS OF BEARING DERIVED FROM WYOMING COORDINATE SYSTEM NAD83 EAST ZONE
7. ALL MEASURED DISTANCES ARE GRID
8. DRAWING NOT TO SCALE



Date of Field Work: 8/11/17

Office Reference: 17-53

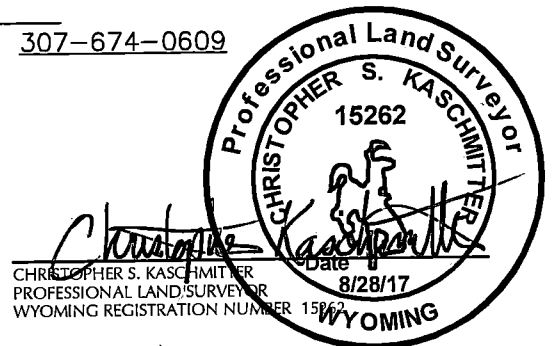
Cross Index Plat



Land Surveyor/Firm/Address

609 Consulting, LLC
1095 Saberton Avenue
Sheridan, WY 82801
 Telephone Number: 307-674-0609

This corner record was prepared by me or under my direction and supervision.



RECP #: 719341
 RECORDED 11/6/2017 AT 10:09 AM BK# 2564 PG# 602
 Debra K. Lee, CLERK OF LARAMIE COUNTY, WY PAGE 1 OF 1

Corner Name: Southwest Corner Section 16, T13N, R61W, 6th P.M. County: Laramie, Wyoming

Cross-Index No.: N-9

SBRPEPLS/PLSW: March 1994; PLSW January 1998